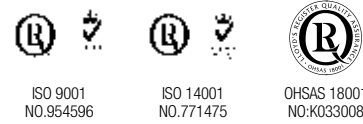


SPECIFICATIONS

MODEL		CS2610	
ENGINE			
Model		S773L	
Type		3 Cyl. Diesel with Pressurized Radiator	
Engine Gross	HP(KW)	26 (19.4)	
PTO	HP(KW)	20.5 (19.3)	
Displacement	cu.in.(cc)	69.0 (1131)	
Rated Revolution	rpm	3,000	
Fuel Tank Capacity	u.s.gal(ℓ)	6.7 (25.5)	
DRIVE TRAIN			
Transmission		HST	
Speeds		Infinite, 2 range	
Differential Lock		Rear Standard	
Brake		Wet Disc Type	
PTO		Independent	
Rear PTO (Standard)	rpm	540	
Mid PTO (Standard)	rpm	2,200	
HYDRAULIC SYSTEM			
Pump		Gear	
Pump Capacity (Max. flow rate)	gpm(ℓ/min)	6.5 (24.6)	
3-Point Hitch		Category I	
Maximum lifting capacity (24" aft. of hitch)	lbs.(kg)	700 (318)	
Hydraulic Lift Control System		Position	
Steering		Power Steering	
TIRE SIZE			
Front TURF (INDUSTRIAL)		18x8.5-10 (18x8.5-10)	
Rear TURF (INDUSTRIAL)		26x12.00-12 (26x12.00-12)	
TRAVELING SPEEDS			
Forward	mph(km/h)	0 ~ 10.31 (0 ~ 16.6)	
Reverse	mph(km/h)	0 ~ 6.96 (0 ~ 11.2)	
DIMENSIONS			
Overall Length (includes 3-pt hitch)	in.(mm)	98.1 (2,493)	
Overall Width (minimum tread)	in.(mm)	46.5 (1,181)	
Overall Height (from top of ROPS)	in.(mm)	88 (2,235)	
Wheelbase	in.(mm)	55.1 (1,400)	
Min. Ground Clearance	in.(mm)	6.4 (162)	
Tread	Tread Width Front 4WD	in.(mm)	45.8 (1,164)
	Tread Width Rear	in.(mm)	50 (1,270)
Min. Turning Radius (with brake)	feet(m)	8.3 (2.54)	
Weight with ROPS	lbs.(kg)	1,485 (675)	

* NOTE : Specifications and design are subject to change without notice.



STANDARD EQUIPMENT

- Rear PTO
- Mid PTO
- Power Steering
- Parking Brake
- PTO Cover
- Headlights
- Warning / Signal Lamps
- Cup Holder
- Horn

OPTIONAL EQUIPMENT

- Front Hydraulic Valve
- Rear Hydraulic Valve
- Rear Working Lights
- Front Weight (60 lbs)
- Cruise Control Kit
- Canopy Kit

ATTACHMENTS

- Front End Loader
- Mid Mount Mower
- Backhoe (Swivel Seat available)



CS2610

26 HP



**Kioti Tractor/
Daedong Industrial. Co., Ltd.**
1422-5, Seocho-Dong, Seocho-Ku, Seoul, Korea
Tel 82-2-3470-7454~9 • Fax 82-2-3470-7485
www.daedong.co.kr



Dealer Imprint Area

LIT-CS2610-ALL

CS2610

KIOTI SUB-COMPACT TRACTOR

The new KIOTI CS210 tractor has been customized for any home-yard-work such as mowing and digging with its optional backhoe. With The KIOTI CS210, you can manage the work on your property areas up to 5 acres or possibly larger.

Power Steering
Rear PTO

Mid PTO
Headlights



Right Hand Lever Controls

The wet multi-disk PTO clutch has a simple mechanical engaging lever. The 3 point lower link lever easily operates the 3 point hitch by simply pushing or pulling the lever.

Mid PTO

The standard mid PTO (2,200 rpm) allows you to use implements such as a mid-mount mower.

12V Power Outlet

The standard 12 volt power outlet is available for accessories.

Distinctive Hood Design

The streamlined hood design improves the visibility for the operator.

A vertical opening hood allows easy access to the air filter and fluid service as well as inspection on fuse box and electrical components.

Illuminated Dashboard

The dashboard illuminates when the engine is started. The digital gauge package includes tachometer, fuel and temperature gauges along with low fuel and high temperature warning lamp.

Power Steering

Power steering is standard and minimizes the effort required to make tight and repetitive turns even with a full loader bucket.

Twin HST Pedals

Little pressure on the Twin HST Pedals enables quick switch on forward & backward directions. By smooth engagement, operators will feel less fatigue during long hours of repetitive tasks.

EASY TO OPERATE, ROBUST AND POWERFUL KIOTI CS2610

60°



Left Hand Lever Controls

The HST with HI-LO range lever allows the tractor to overcome a wide range of load tasks. The rear PTO and mid PTO can be controlled separately or together with a simple in-line shifting lever. The height adjustment lever allows the operator to control the mid-mount mower grass cutting height easily.



Foldable ROPS

The standard fold-down roll bar makes it quick and easy to maneuver in low clearance areas.



Headlights

55W lamps are the brightest in this tractor's class.



Four Wheel Drive

4WD is standard on the CS2610 tractor and a single lever engages the 4WD.



Ergonomic Operator Station

The ergonomically designed work station places operator controls within easy reach to enjoy a comfortable and smooth ride. A retractable seat belt and operator presence switch are equipped for safety.



Rear PTO and 3-Point Hitch

The rear PTO and high capacity three point hitch can accommodate a variety of implements and attachments. The flip up PTO guard ensures easy implement attachment. The bent lower link facilitates installing implements.



Premium Diesel Engine

A 26 HP optimized combustion diesel engine has large power output yet low fuel consumption. Fluid service and inspection locations are easily accessible to the operator.



KIOTI SUB-COMPACT TRACTOR



Backhoe Specification



Backhoe Model : SB2410 Tractor Model : CS2610

MODEL	SB2410
Digging Depth (two foot flat bottom)	84 (2,134mm)
Reach from center line of Swing Pivot	113.9 (2,895mm)
Loading Height (bucket at 60°)	52.2 (1,326mm)
Maximum Leveling Angle	27.2 in. (690 mm)
Swing Arc	8°
Transport Height (maximum)	150°
Transport Overhang	70.5 (1,792mm)
Bucket Rotation	48.8 (1,240mm)
Stabilizer Spread (down position)	163°
Stabilizer Spread (up position)	87.7 (2,230mm)
Angle of Departure	55.7 (1,416mm)
Shipping Weight (without bucket)	14°
Bucket Digging Force	657 lbs. (298Kg)
Dipperstick Digging Force	2,096 lbs. (951Kg)
Operating Pressure	1,159 lbs. (526Kg)
Rated Flow (Tractor System)	1,885 psi (130bar)

Cylinders				
Cylinder	Bore DIA	Retracted Length	Stroke	Rod DIA
Boom	2.36	22.64	14.37	1.38
Bucket	2.36	21.06	11.42	1.38
Dipperstick	2.36	20.63	11.93	1.38
Swing	2.36	15.24	7.87	1.38
Stabilizer	1.97	18.31	10.43	1.18

Bucket Sizes				
Bucket	Teeth Quantity	Struck Capacity	Heaped Capacity	Shipping Weight
8" Bucket	3	0.60 cu. ft.	0.70 cu. ft.	61.7 lbs.
12" Bucket	3	0.92 cu. ft.	1.18 cu. ft.	75 lbs.
16" Bucket	3	1.22 cu. ft.	1.64 cu. ft.	86 lbs.

*Specifications and design are subject to change without notification

Mid Mount Mower Specification



MODEL	SM2410
Discharge Type	Side Discharge
Cutting Width	60 (1,524 mm)
Cutting Height	1~4 (25.4~101.6 mm)
Transport Height	6 (152.4 mm)
Gear Type	3
Number of Blades	2888 rpm
Blade Spindle Speed	78.2 m/s
Blade Tip Velocity	3
Blade Length	20.4 (517mm)
Deck Thickness	0.13 (3.2mm)
Total Width	73.4 (1,865mm)
Total Length	37.9 (962mm)
Total Height	10.8 (273mm)
Drive Type	U-Joint & V-Belt
Lifting Type	3 Point Hitch Links
Compatible with Loader	Yes

*Specifications and design are subject to change without notification